

minus-ramps.com

Minus Ramps

Fon: +49 (0)40 2549 3318, Fax: +49 (0)40 2878 3689
Außendienst, Herr Grabowski, Mobil: +49 (0)177 492 44 99
Email: info@minus-ramps.com, Website: minus-ramps.com



Minus Ramps is a team of architects, developers, qualified craftsmen and skateboarders which guarantee a quality skatepark through close collaboration and teamwork. We plan, build and test our skateparks. Our speciality are ramps constructed out of wooden frames with wood or synthetic facings. Since 2006 we have expanded our portfolio into the design and supervision of local concrete surfaces.

Skateboarding is constantly changing and adapting. That is why innovative design takes up an important role in our work. Because our team has deep roots in skateboarding, we can claim with a clear conscience that our parks are up-to-date and that they will remain a challenge for skaters in the future.



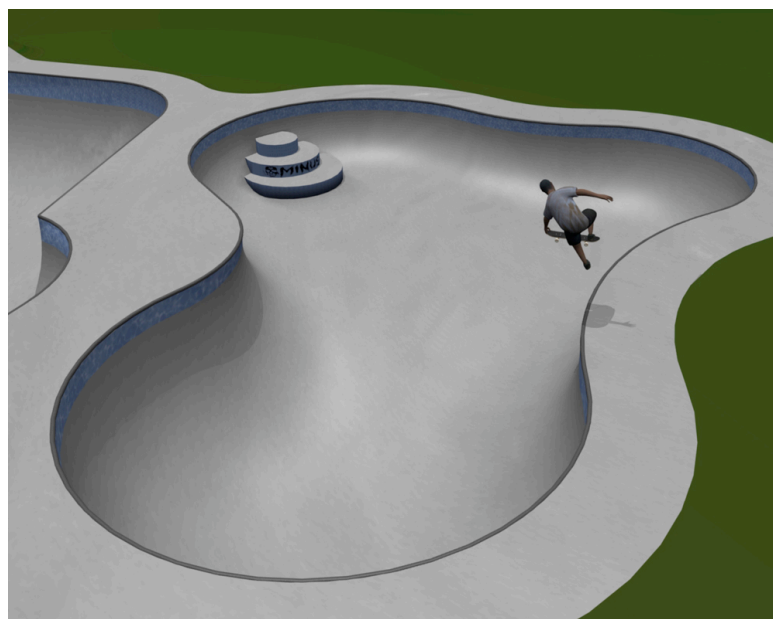
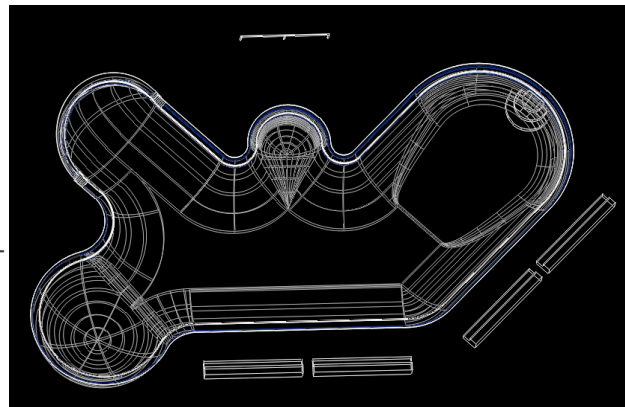
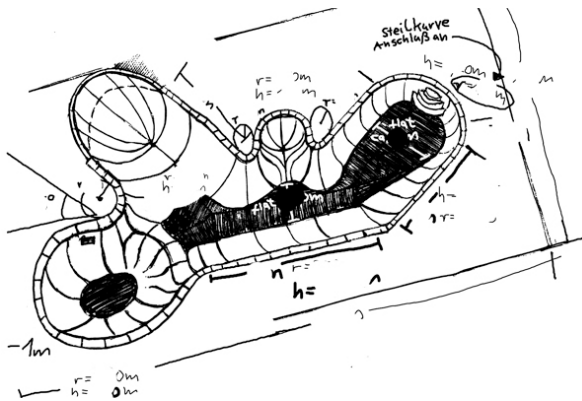


Design and Development

The design and development is one of the first and most important phases of the project. We plan our parks in close collaboration with the active skateboarder scene. Because our employees are all active skateboarders, their experience and innovative ideas are exclusively put into the design concept.

We start with ideas which are collected and sketched out. Only when these fit together do we create the primary design. This design then moves on to the next phase of conception under consultation of the local scene.

A design in the form of a construction plan is only then a good plan when it has been changed, adapted and optimized up to the very last moment. This also applies to the optimization of the construction directly on site.





Construction and Testing

Only a high quality implementation of the plans can guarantee an ideal functionality of design and a perfect ride. We have the schooled eyes of a skateboarder with many years of experience so we can guarantee the final finish of the riding surfaces with the best riding characteristics which are: smoothness and grip.

We supervise the complete construction operation all the way to the very last finish. This allows us to test and optimize the radiuses, curves and transitions during the construction phase. The result is a guarantee for a smooth ride and sufficient challenges for every age group.





What should a skatepark offer?

A skatepark should bring together different types of riding and all age groups. Skateboarding and BMX have long since grown out of being pastimes for only young people. They are an attitude to life and have evolved into acknowledged sports. Skateboarding has integrated itself into our culture and it is here to stay.

You don't just go skateboarding at a skatepark: skateparks are in fact social meeting points. That makes it even more important that not only the different types of skateboarding such as street, bowl and vert come together with the respective age groups. The balance of all of these age groups must be provided. Because the bigger the difference in age groups is, the larger variation in riding styles you'll see. And the many different styles lead to a more interesting and inspiring development of the level of skating. To raise and support the different levels of skating which will help the riders' interest in the park grow, the park itself needs to have different individual challenges. These should be built into the park with an eye for the future so that the skatepark remains challenging for all skaters in the coming years.



We are looking forward to our work and cooperation with you
and every new good skatepark,

Your Minus Ramps team